

GCM

**Gravure Coating Press for Functional Coating
& Medical Packaging**



KYMC



Comprehensive Protective Measures on Solvent-Based Coating Operations

GCM model has remained perennially successful in applications within the functional coating and medical packaging industries. The design of GCM model prioritizes safety and coating quality to ensure the production of your coating products. In response to the explosive gas hazards associated with solvent-based coating operations, our professional considerations can provide comprehensive protective measures, including the delineation of hazardous areas, adequate positive pressure and ventilation systems, L.E.L. systems, and various safety interlock devices.

Specifications		GCM
Max Machine Speed	m/min	250
	ft/min	820
Material Width	mm	600 / 800 / 1100 / 1200 / 1300 / 1500
	inch	23.6 / 31.5 / 43.3 / 47.2 / 51.2 / 59.1
Max Roll Diameter	mm	600 / 800 / 1000 / 1200 / 1500
	inch	23.6 / 31.5 / 39.4 / 47.2 / 59.1

Standard Specification

- Non-Stop Turret type Splicing Design for all Winders.
- Glue / Adhesive supplying system included.
- Gravure Coating design (other type of coating is available)
- High efficiency Drying system with Temp. control.
- Automatic line speed and tension control
- Automatic edge guiding system

Automation:

- Auto speed and tension control on coating station, laminating nip and all winders.
- Centralized control and monitoring system with clear structured graphics for easy operation.
- Machine functions are PLC controlled, user friendly touch screen operation.
- Job memory (Recipes) with auto machine pre-setting for coating weight and running tension.

Operation Comfort

- Integrate with the current machine's touch screen interface or independent touch screen for operational control.
- User friendly layout screen control

Remote Service Assistance

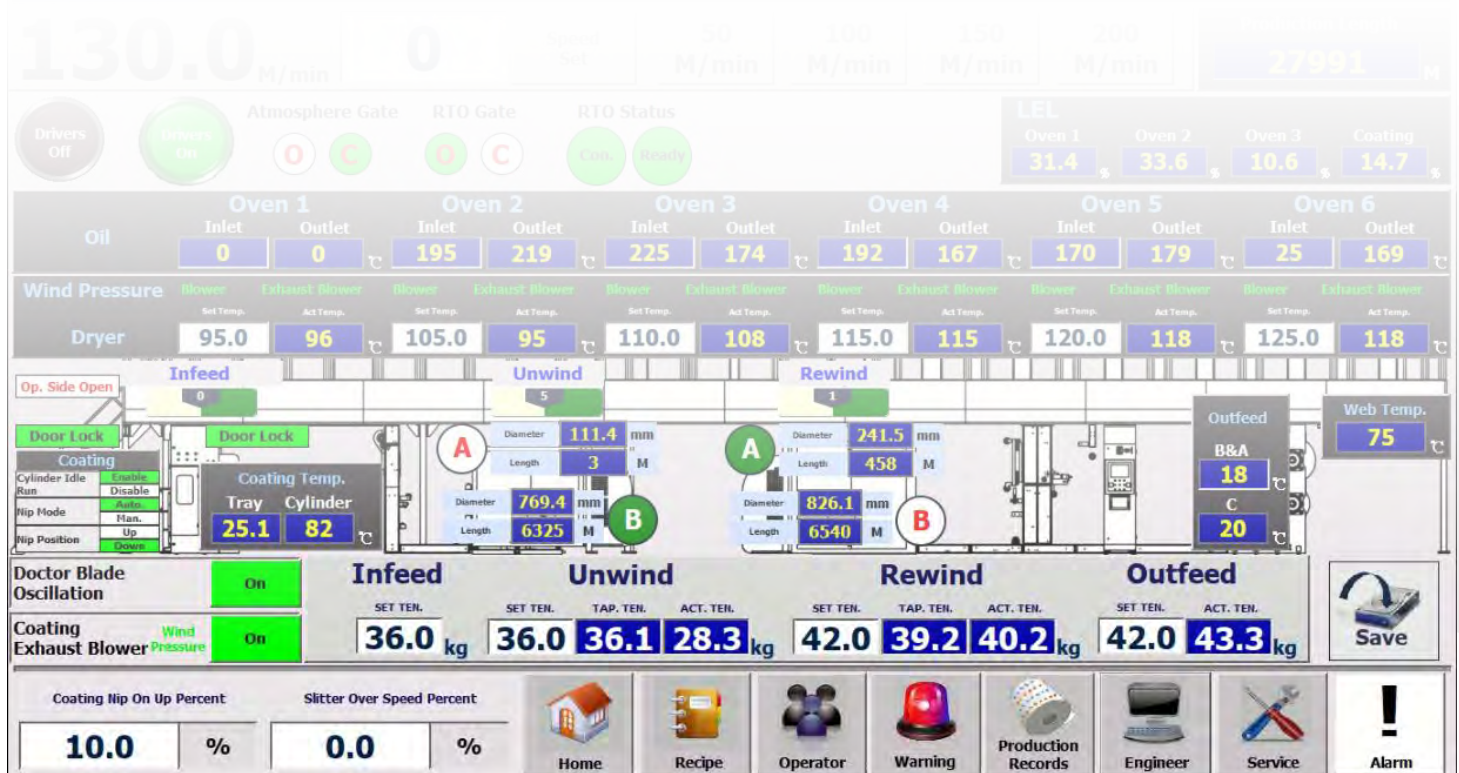
- 24/7 machine online diagnostic system
- Exclusive PLC Network Connection Technology to achieve deep online diagnose and prompt remote-maintenance.

Industrial I4.0

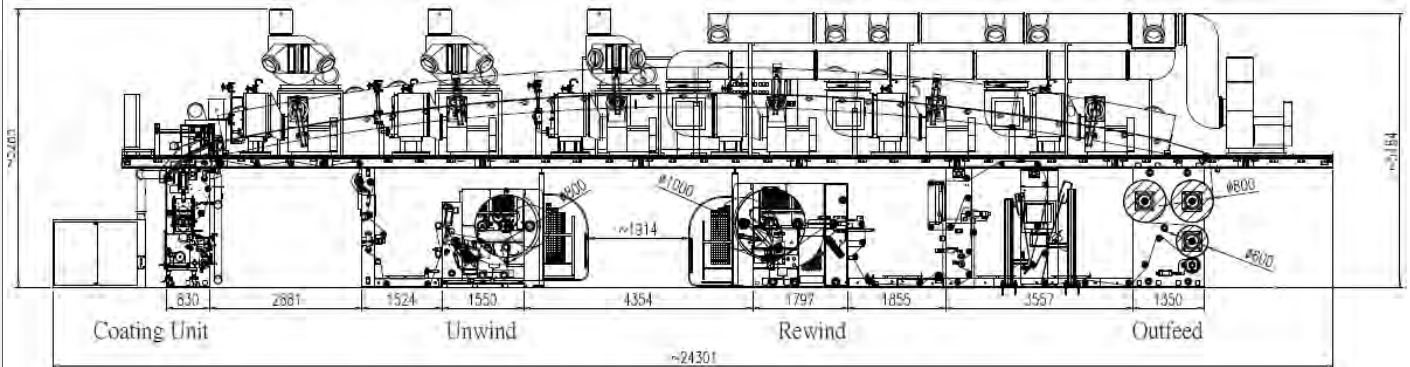
- OPC UA Data Exchange Protocol for communication between devices, machines and enterprise systems (ERP, SCADA, CRM...etc)
- Remote HMI monitoring via mobile devices

Safety

- Compliant with Conformité Européene or Australian Standard
- Certification service available with CSA, NEC and IEC



TECHNICAL DRAWING



Application

- **Paper**
Food packaging, Barrier coating, Medical packaging
- **Film**
Functional substrates, Food packaging, Industrial packaging
- **Aluminum**
Functional substrates, Food packaging, Industrial packaging

GCM



KUEN YUH MACHINERY
ENGINEERING, CO., LTD.

No.8, Jingke Rd., Nantun Dist., Taichung 408, Taiwan

Tel: +886-4-2359-3830 . 2359-3836 . 2359-38663

Fax: +886-4-2359-3970 . 2350-1242

<https://kymc.com>

Email: info@kymc.com

