

# PRIMA

The Flagship CI with the most  
Cutting-Edge Technologies



**KYMC**



## ■ For Maximum Efficiency and Minimum Human Intervention

The state of the art gearless flexo roll to roll printing machine and is one of the best valued gearless press on the market. As the flagship press is equipped with the highest automation, precision, stability, and edge-computing technologies available. The press technologies along with its structural design allow for maximum press speed, working on the widest range of substrates. If you are looking for maximum efficiency and minimum human intervention, this is your smart choice for the mainstream market!

Specifications		PRIMA
Number of Colors		4 / 6 / 8 / 10
Max Machine Speed	m/min ft/min	500 / 600 1640 / 2000
Material Width	mm inch	670 / 870 / 1070 / 1270 / 1370 / 1570 26.4 / 34.4 / 42.1 / 50 / 53.9 / 61.8
Printing Sleeve Width	mm inch	600 / 800 / 1000 / 1200 / 1300 / 1500 23.6 / 31.5 / 39.4 / 47.2 / 51.2 / 59.1
Roll Diameter	mm inch	800 / 1000 31.5 / 39.4
Repeat Length	mm inch	300 / 360 - 800 11.8 / 14.2 - 31.5



## ■ Standard Specification

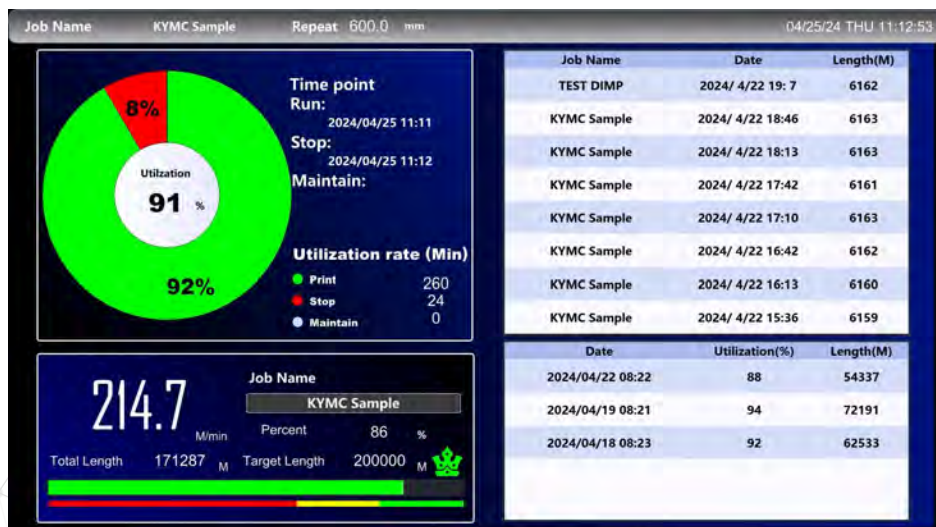
- Non-stop turret type unwind and rewind
- 6 meter drying tunnel
- Print and Anilox sleeve
- Auto wash system
- Auto registration and impression system
- Infeed web guide
- Smart Production Monitoring System

## ■ Operation Comfort

- Touch screen interface
- User friendly layout screen control
- Fully digitalized controls for precise registration settings
- Fully digitalized control for precise impression settings
- Auto impression lift when splice runs through the printing head
- Easy access to printing stations

## Smart Production Monitoring System

- Digital kanban system for quick monitoring on production status including job information, printing setup, ink management, and auto splicing
- Easier for operators and executives to supervise multiple printing line
- Production analysis records on machine OEE utilization rate, daily output etc, able to export production data in a form of report
- Live view during auto splicing and auto wash, with ink supply control, such as viscosity and temperature.
- Industrial standard tablet computer for wireless control. A more flexible, and efficient way of operating.



## Quick job Change

- Anilox and plate sleeve design
- Auto pre-register control
- Auto quick wash and auto viscosity control for ink management
- Job memory for repeat tasks
- Auto CI drum cleaning system (optional)

## Remote Service Assistance

- 24/7 machine online diagnostic system
- Exclusive PLC Network Connection Technology to achieve deep online diagnose and prompt remote-maintenance.





## Print Quality

- Robust mono-block structure design
- Servo motor control guarantee excellent print registration holding
- 100% defect detection (optional)
- Most advance print and defect detection system
- Automatic registration control
- Micrometric kiss impression control to one micron

## Industrial I4.0

- OPC UA Data Exchange Protocol for communication between devices, machines and enterprise systems (ERP, SCADA, CRM...etc)
- Remote HMI monitoring via mobile devices

## Safety

- Compliant with Conformité Européene or Australian Standard
- Certification service available with CSA, NEC and IEC



## Application

- **Paper**

Food packaging, Medical packaging, Pre-print for paper box, Bags, Paper cup, Liquid & beverage, Household cleaning, Cosmetics, Gift wraps, Wallpaper

- **Film**

Food packaging, Medical packaging, Industrial packaging, Sanitary Pack-aging, Bags, Liquid & beverage, Household cleaning, Cosmetics, Confec-tionary wrappers

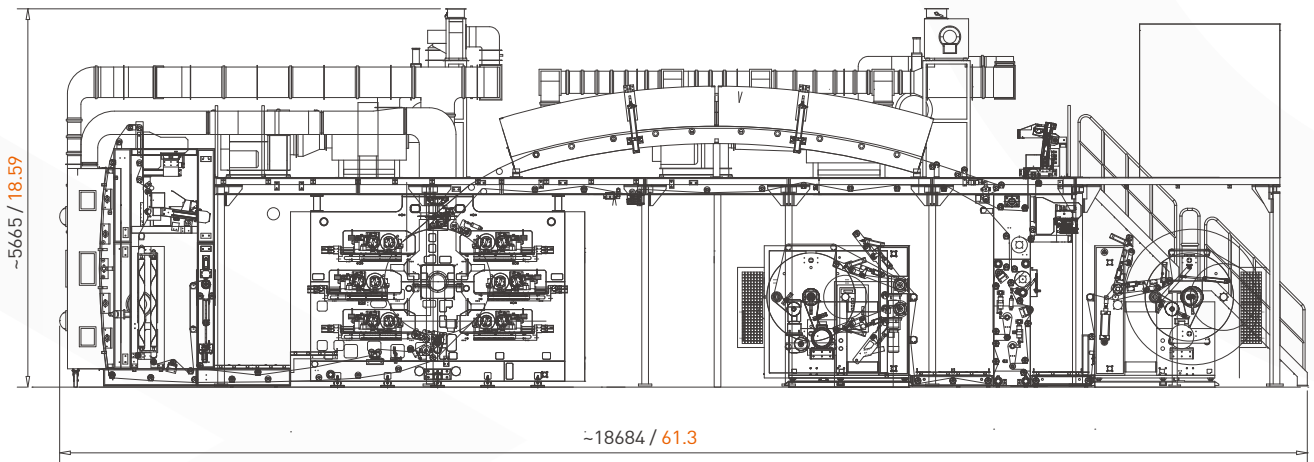
- **Aluminum**

Food packaging, Medical packaging, Industrial packaging

- **Woven Bag**

## TECHNICAL DRAWING

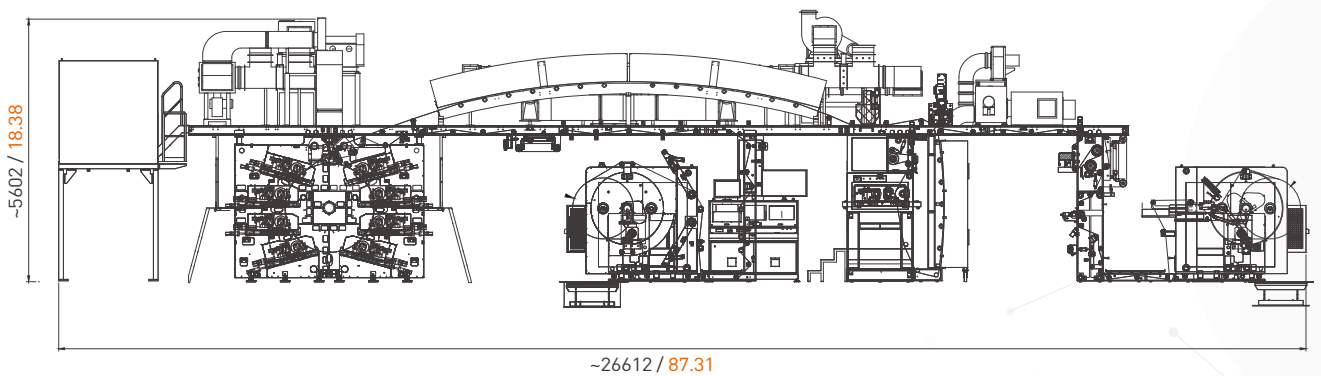
### SIX - COLOR PRINTING PRESS



UNIT: mm / ft

## TECHNICAL DRAWING

### EIGHT - COLOR PRINTING PRESS



UNIT: mm / ft

PRIMA



KUEN YUH MACHINERY  
ENGINEERING, CO., LTD.

No.8, Jingke Rd., Nantun Dist., Taichung 408, Taiwan

Tel: +886-4-2359-3830 . 2359-3836 . 2359-38663

Fax: +886-4-2359-3970 . 2350-1242

<https://kymc.com>

Email: [info@kymc.com](mailto:info@kymc.com)

